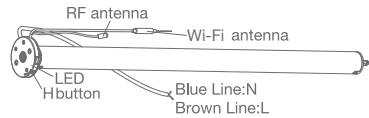


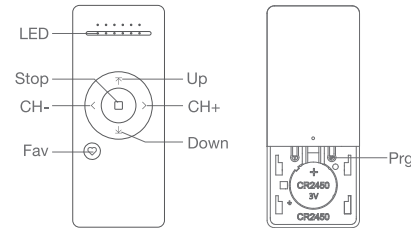
DC Wi-Fi Tubular Motor with Transformer(AC Supply) User Manual

01 Product Info



Working temperature
55°C
-10°C

Remote Controller Buttons



Power Options



Models & Parameters (for details about other parameters, see the product nameplate)

JCD	25	S	TE	11	30	W
DC Motor	Tube Diameter: 25 mm	S: Standard Q: Quiet P: Performance	With Transformer	Torque: 1.1N.m	Speed: 30 Rpm	Built-in Wifi module

02 Caution!



- This product is for indoor use only, do not use outdoor or in humid environments.
- The power supply is AC supply (AC100~240).
- The motor will jog in operation, please do not proceed to the next step until it complete.
- During operation, the effective interval of the transmitter button operation is 10 seconds.
If there is no effective transmitter operation for more than 10 seconds, it will automatically exit the current mode.
- The motor can be paired with max 10 controllers
- Upper&Lower limits cannot be set at the same position, limits saved even power off.
- The motor runs constantly for at 6 mins max without any other operation.
- Do not lift the motor by grabbing the wire or antenna.

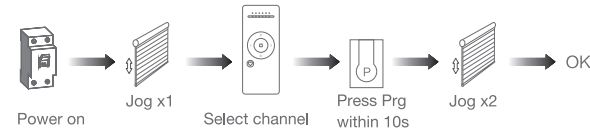
03 Instructions

Motor head button (H) functions

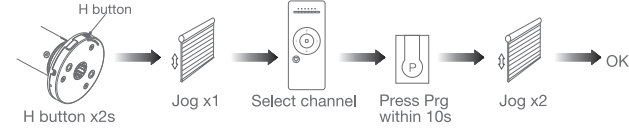
Functions	Operation	Jogging time	LED lamp flickers	Note
Control the UP/STOP/DOWN of the Shade	Short press	/	/	Can only operate after the limits are set
Adding/Removing Controller	Hold for 2s	Jog*1	Flicker*1	Operation needs be done within 10s
Wi-Fi connecting	Hold for 6s	Jog*2	Flicker*2	Entering Wi-Fi connection mode
Direction Reverse	Hold for 10s	Jog*3	Flicker*3	All settings saved after direction reversed
Reset	Hold for 16s	Jog*4	Flicker*4	All settings deleted

a. Pairing Motor with Controller

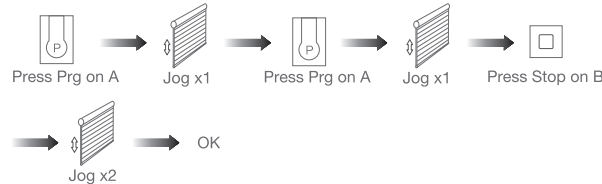
Way 1: Before adding a new controller



Way 2: After motor is powered on for more than 10s

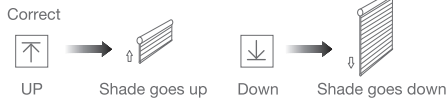


Way 3: Power on, add controller B via pre-existing controller A

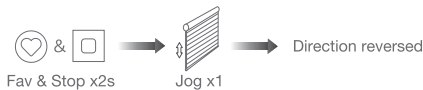


Note: Pairing can not be done under group channel or 0 channel.

b. Direction Reverse



If the limits are not set, and direction goes opposite.



If limits are set and direction goes opposite.



→ OK

Note: Do reverse the direction when it goes opposite.

c. Upper&Lower Limits Setting



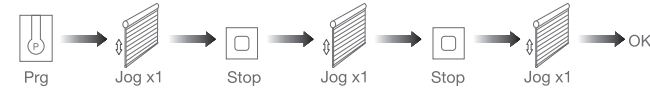
Note: Upper&Lower limits cannot be set at the same point.

Before limits set, the motor will run in one-touch mode by pressing Up or Down, hold Up or Down for 2s, motor runs in constant-touch mode.

Once limits set, press Up or Down, motor runs in constanttouch mode.

d. One-touch/Constant-touch Mode

Constant-touch ----->One-touch



Same operation can toggle from one-touch to constant-touch mode.

Note: When motor in one-touch mode, hold Up or Down for more than 2s, it will run in constant-touch mode.

e. Setting and Cancelling Favorite Position

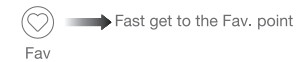
Setting



Cancelling



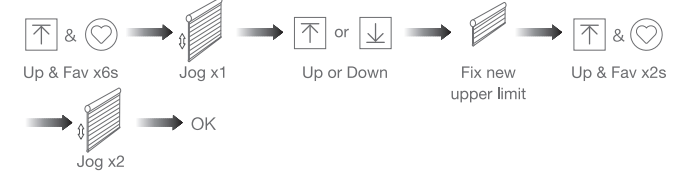
f. Hot key to the Fav. Position



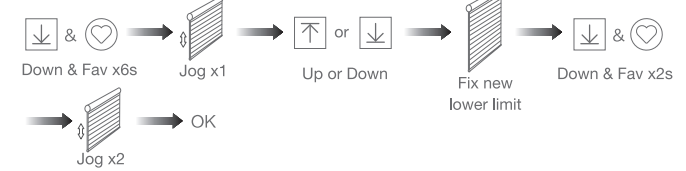
Note: The Fav. position setting only can be done after upper&lower limits set.

g. Adjusting Upper & Lower Limits

Adjust Upper limit

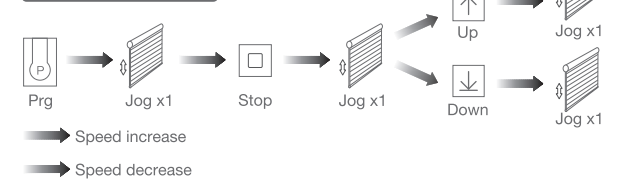


Adjust Lower limit



Note: The operation should be done within 4mins.

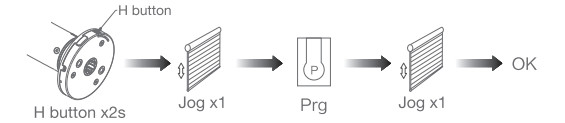
h. Adjusting Motor Speed



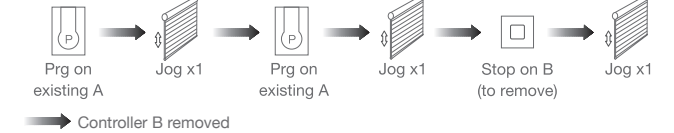
Note: If motor doesn't jog, the max/min speed has already been reached. There are 3 speeds adjustable.

i. Removing Controllers

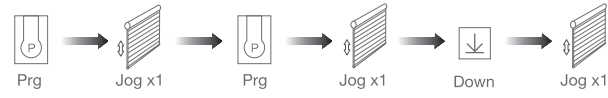
Remove a single controller



Remove controller B via pre-existing controller A



Remove all controllers:



➡ All controllers removed

Note: All the settings are saved even controllers removed (limits set are saved).
Controller A/B are already paired to motor.

j. Cancelling Limits



➡ Limits cancelled

Note: It is forbidden to run the motor if installed into the shade without limits.
Limits should be set immediately to protect the shade.

04 Connecting to Wi-Fi Network

*Connection requirement

The smart phone needs to connect to Wi-Fi network and turn on the Bluetooth function first.

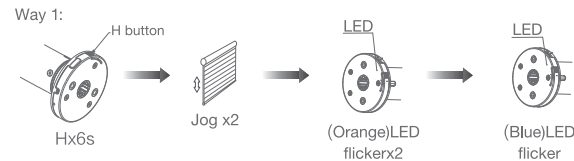
1 Download APP

a. Search for "Smart Life" in the app store or scan the QR code



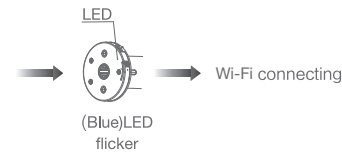
b. Complete account registration and login to the app

c. Operate the motor to enter Wi-Fi network connection mode:

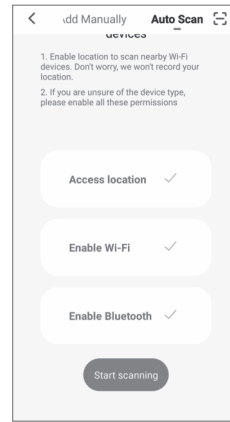
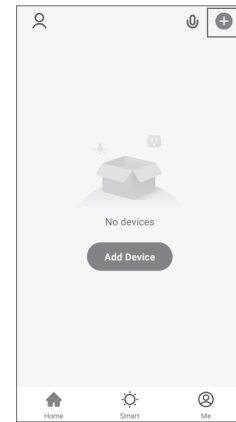


➡ Wi-Fi connecting

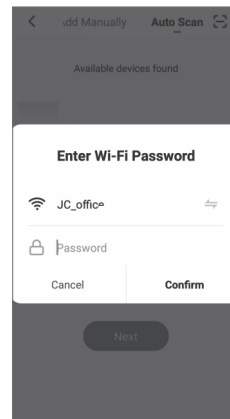
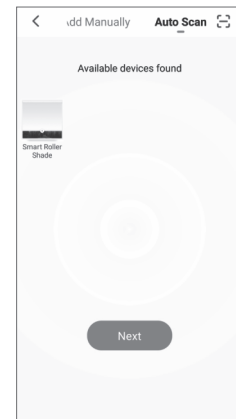
Way 2:



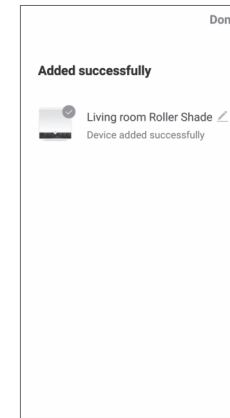
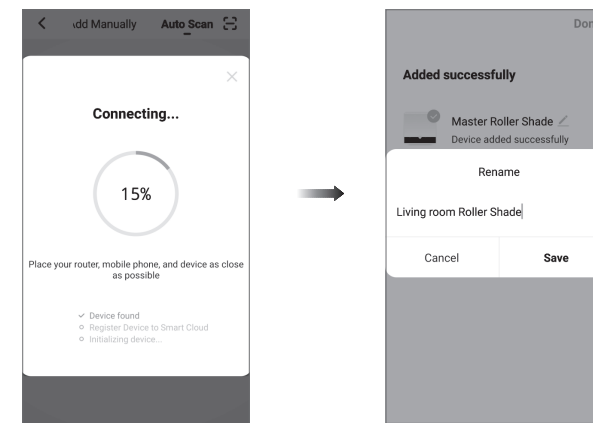
d. Click "+" in the upper right corner of the APP, then click "Auto Scan", the APP will automatically search for tubular motor



e. Click "Next" when you find the device, enter the Wi-Fi account password and click "Confirm" to connect.



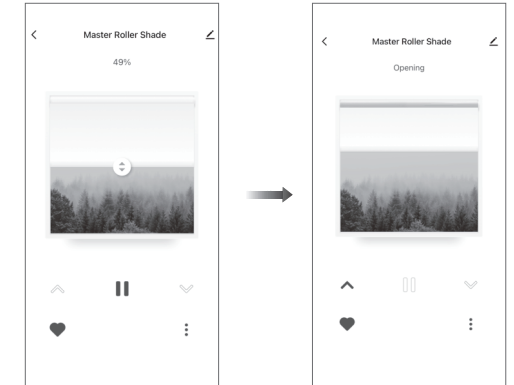
f. After adding device successfully, tap "✎" after the device name to modify the device name.



g. After the motor device is added successfully, the LED on motor head will be on for 10s and then go off.



h. Now the motor can be controlled by App from anywhere, anytime



05 Troubleshooting

Fault	Cause	Solution
Motor does not work	1. Controller not paired 2. Motor inactive	1. Add controller 2. Hold H button for 2s to activate motor
Motor stops suddenly	1. Upper & Lower limit set incorrectly 2. Shade exceed rated load	1. Re-set Upper & Lower limits 2. Adjust load
Motor just goes in one direction	Wrong limits set	Cancel original limits, set new limits