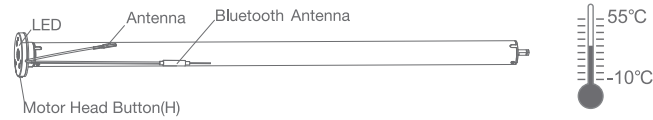
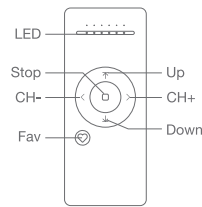


Bluetooth Motor with Built-in Li-ion Battery (USB Charging) User Manual

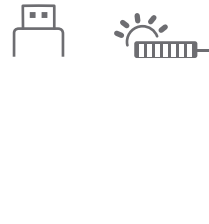
01 Product Info



Remote Controller Buttons



Power Options



Models & Parameters (for details about other parameters, see the product nameplate)

JCD	25	S	LE	U	11	30	B
DC Motor	Tube Diameter: 25 mm	S: Standard Q: Quiet P: Performance	LE: With built-in Li-ion battery	USB Port	Torque: 1.1 N.m	Speed: 30 rpm	Bluetooth module

02 Caution!



- This product is for indoor use only, do not use outdoor or in humid environments.
- This motor has a built-in rechargeable Li-ion battery pack with integrated charge management. Max input voltage: 5V/2A.
- Please charge it before using for the first time, make sure it is fully charged before first use.
- When the battery voltage is low, LED will flicker 8 times to give a low-voltage alarm when motor starts.
- The motor will jog in operation, please do not proceed to the next step until it complete.
- During operation, the effective interval of the transmitter button operation is 10 seconds. If there is no effective transmitter operation for more than 10 seconds, it will automatically exit the current mode.
- The motor can be paired with max 10 controllers.
- Please do not use motor when charging.
- Upper&Lower limits cannot be set at the same position, limits saved even power off.
- The motor runs constantly for at 6 mins max without any other operation.
- Do not lift the motor by grabbing the wire or antenna.

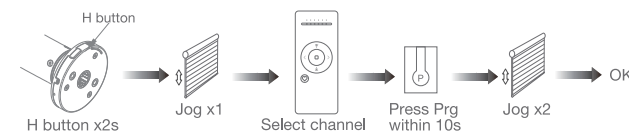
03 Instructions

Motor head button (H) functions

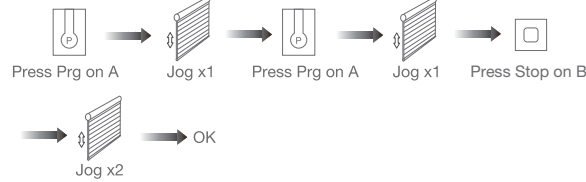
Functions	Operation	Jogging time	LED lamp flickers	Note
Control the UP/STOP/DOWN of the Shade	Short press	/	/	Can only operate after the limits are set and motor is not in sleep mode
Adding/Removing Controller	Hold for 2s	Jog*1	Flicker*1	Operation needs be done within 10s
Bluetooth Connecting	Hold for 6s	Jog*2	Flicker*2	Entering Bluetooth connection mode
Direction Reverse	Hold for 10s	Jog*3	Flicker*3	All settings saved after direction reversed
Reset	Hold for 16s	Jog*4	Flicker*4	All settings deleted

a.Pairing Motor with Controller

Way 1: Power on, add a new controller

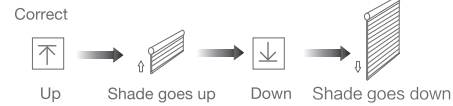


Way 2: Power on, add controller B via pre-existing controller A



Note: Pairing can not be done under group channel or 0 channel.

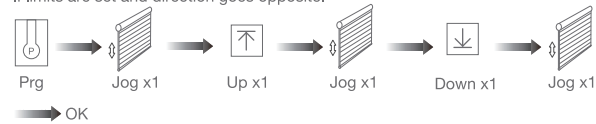
b.Direction Reverse



If the limits are not set, and direction goes opposite.

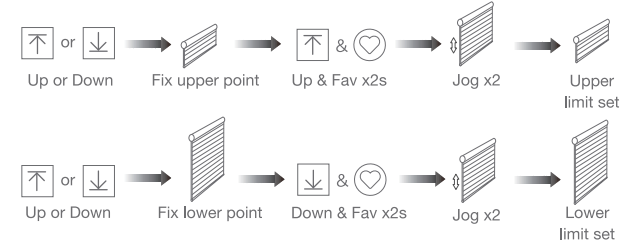


If limits are set and direction goes opposite.



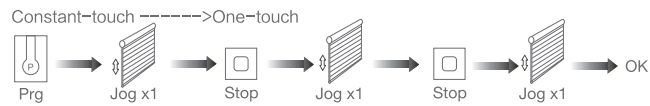
Note: Do reverse the direction when it goes opposite.

c.Upper&Lower Limits Setting



Note: Upper&Lower limits cannot be set at the same point. Before limits set, the motor will run in one-touch mode by pressing Up or Down, hold Up or Down for 2s, motor runs in constant-touch mode. Once limits set, press Up or Down, motor runs in constant-touch mode.

d.One-touch/Constant-touch Mode



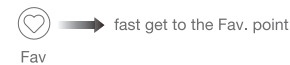
Same operation can toggle from one-touch to constant -touch mode.

Note: When motor in one-touch mode, hold Up or Down for more than 2s, it will run in constant-touch mode.

e.Setting and Cancelling Favorite Position

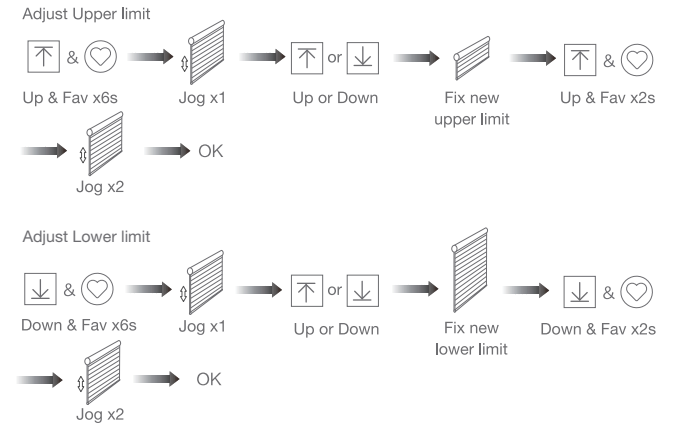


f.Hot key to the Fav. Position



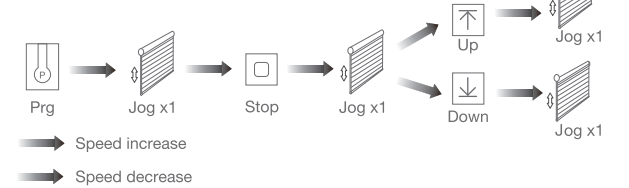
Note: The Fav.position setting only can be done after upper&lower limits set.

g.Adjusting Upper & Lower Limits



Note: The operation should be done within 4mins.

h.Adjusting Motor Speed



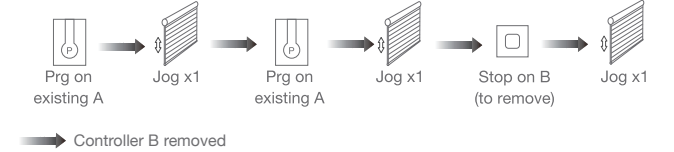
Note: If motor doesn't jog, the max/min speed has already been reached. There are 3 speeds adjustable.

i.Removing Controllers

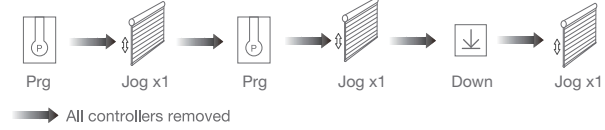
Remove a single controller



Remove controller B via pre-existing controller A

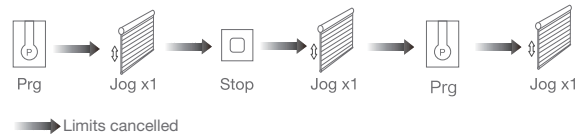


Remove all controllers:



Note: All the settings are saved even controllers removed (limits set are saved).
Controller A/B are already paired to motor.

j. Cancelling Limits



Note: It is forbidden to run the motor if installed into the shade without limits.
Limits should be set immediately to protect the shade.

k. Bluetooth Connecting

*Connection requirement

- a. Make sure the phone has Bluetooth turned on.
- b. The Tuya Bluetooth gateway device needs to be added to the "Smart Life" APP first, please refer to its manual for details. (Optional)

Note: Without gateway, App can not control the motor off-site.

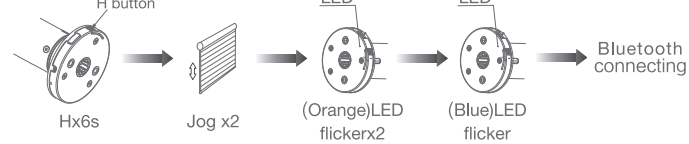
① Download APP

- a. Search for "Smart Life" in the app store or scan the QR code
- b. Complete account registration and login to the app,

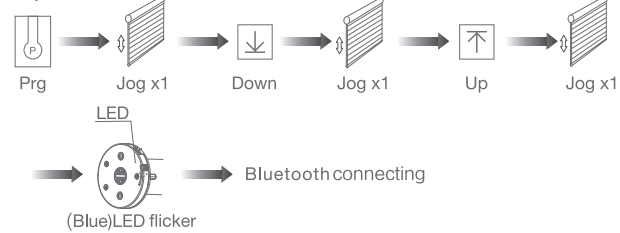
② Add Device

- a. Make sure the phone has Bluetooth turned on.
- b. Make sure the Bluetooth gateway device is connected to App.
- c. Make the motor is ready to be connected to Bluetooth by following steps:

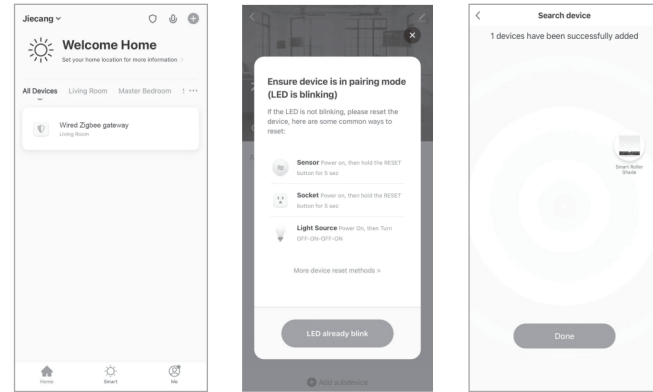
Way 1:



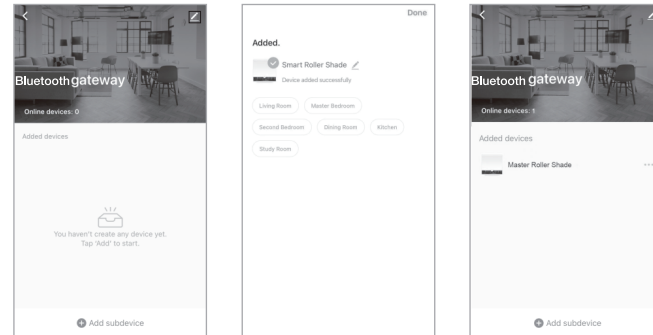
Way 2:



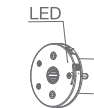
d. Find the added Bluetooth gateway on the App, click "+" to add a sub-device, and then click "LED already blink", the APP will automatically search for motor device.



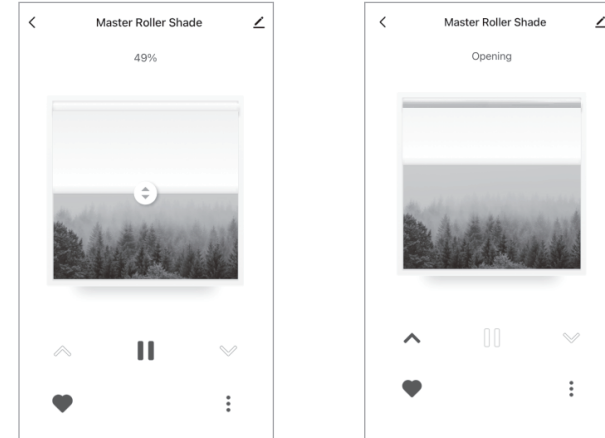
e. After adding successfully, click "✎" to modify the device name.



f. After the motor device is added successfully, the LED on motor head will be on for 10s and then go off.



g. Now the motor can be controlled by App from anywhere, anytime.



04 Troubleshooting

Fault	Cause	Solution
Motor does not work	1.Controller not paired 2.Motor inactive 3.Low battery	1.Add controller 2.Hold H button for 2s to activate motor 3.Charging
Motor stops suddenly	1.Upper & Lower limit set incorrectly 2.Shade exceed rated load 3.Low battery	1.Re-set Upper & Lower limits 2.Adjust load 3.Charging
LED flickers 8 times on motor head when motor starts	Low battery	Charging